



Population Matters Trends and Transitions

AC-REP

May 2023

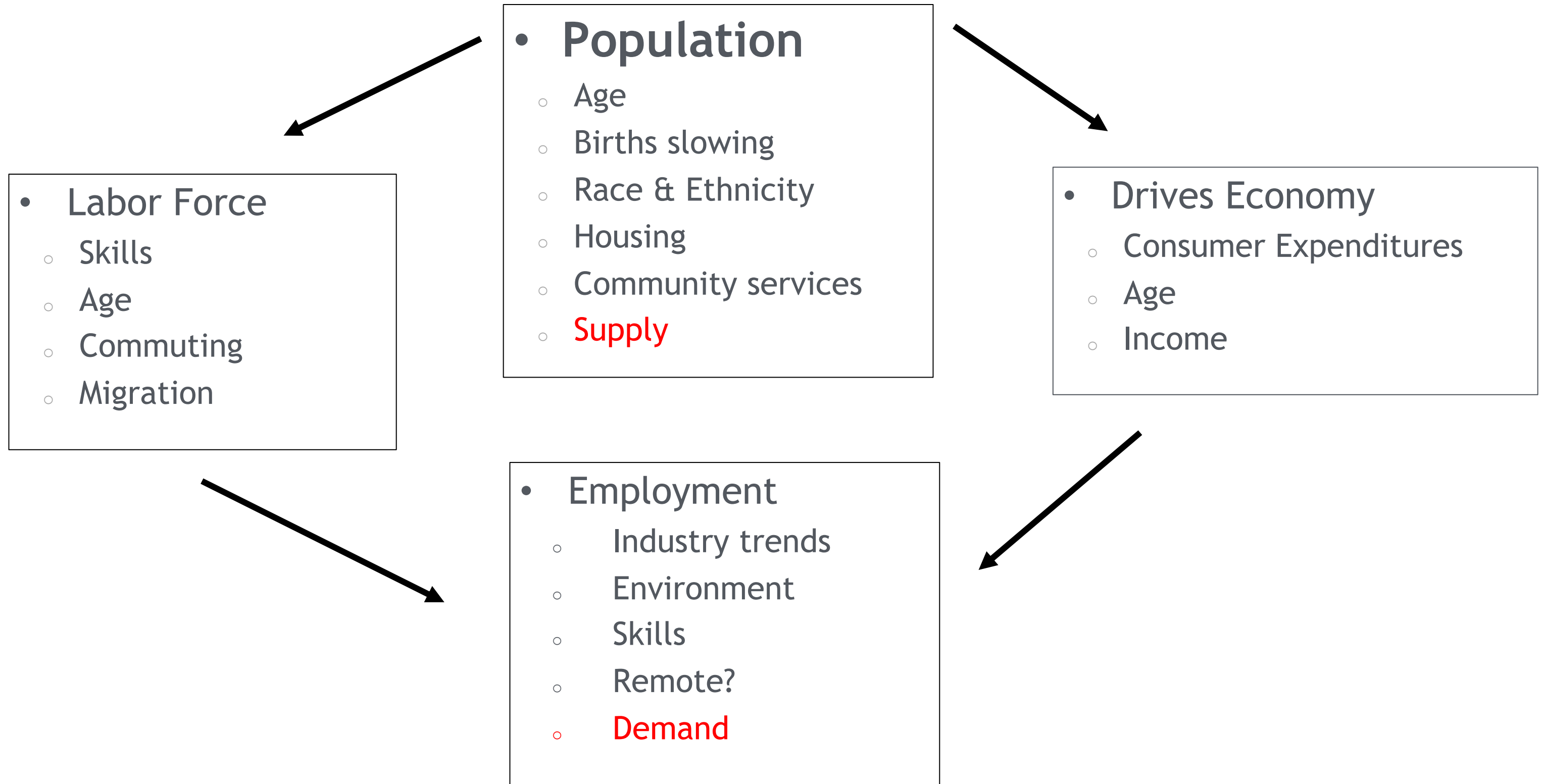
State Demography Office, Department of Local Affairs

Demography.dola.colorado.gov



COLORADO
Department of Local Affairs

Everything is Connected



Trends - after COVID

- Population growing at a slowing rate - births down, deaths up
- Migration and mobility slowing
 - Harder to attract and retaining the best and brightest.
- Concentrated growth in Front Range - both jobs and people
- Aging - impacts everything
 - Largest share of future growth is the 65+
 - Prime working age 25-54 becoming smaller share of total pop.
- Growing racial and ethnic diversity.



Big Picture

Growth is Slowing

	2010-2020		2020-2021		2021-2022	
United States	22.3MM	7.4%	520k	0.1%	1.256MM	0.4%
Colorado	744.5k	14.8%	26.5k	0.5%	27.7k	0.5%
Colorado Rank	9th	6th	11th	20th	12th	19th

- 2010 - 2020
 - Second slowest decade for US in terms of growth
- 2020 - 2021
 - Slowest year for US growth rate;
 - 17 states lost population
- 2021 - 2022
 - 19 states lost population

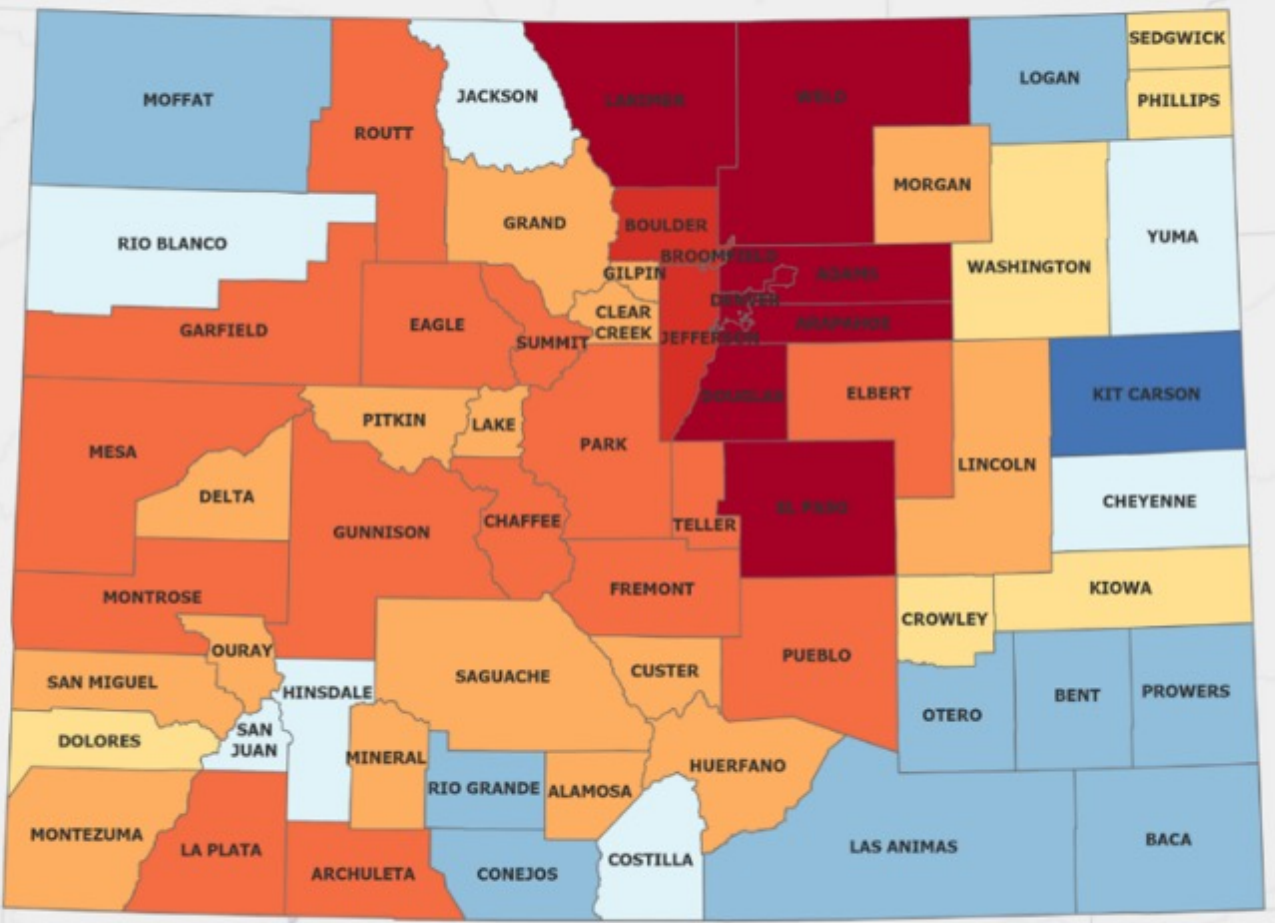


Total Population Change

2010 - 2020

Population Change

- 1,189 to -1,000
- 999 to -100
- 99 to 0
- 1 to 100
- 101 to 1,000
- 1,001 to 10,000
- 10,001 to 50,000
- 50,001 to 112,753



Source: Colorado State Demography Office

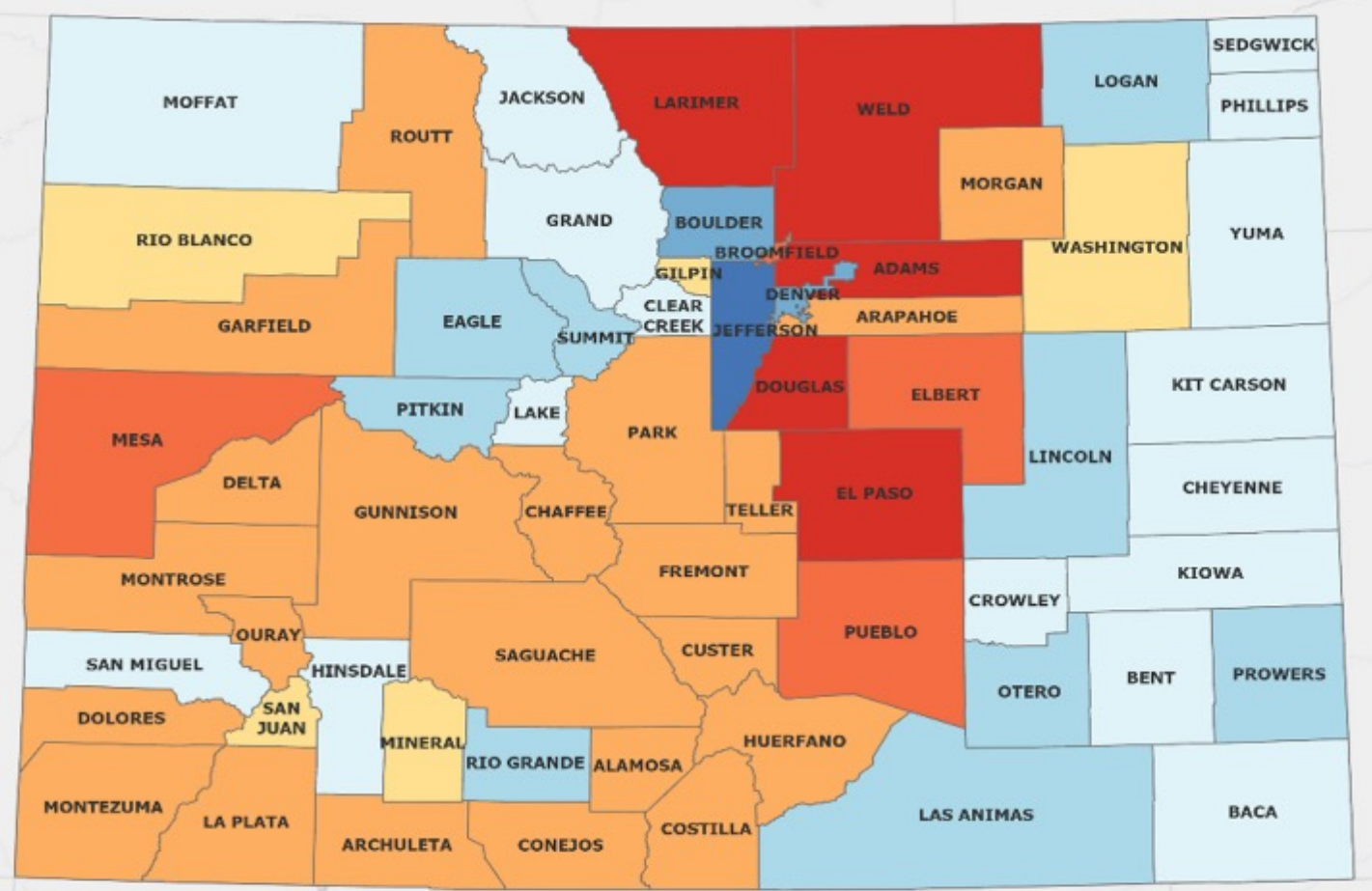
November 2021

Total Population Change

2020 - 2022

Population Change

- 7,127 to -5,000
- 4,999 to -1,000
- 999 to -100
- 99 to 0
- 1 to 100
- 101 to 1,000
- 1,001 to 5,000
- 5,001 to 18,783



Source: Colorado State Demography Office

April 2023

2010 to 2020 - 95% of population and job growth along Front Range

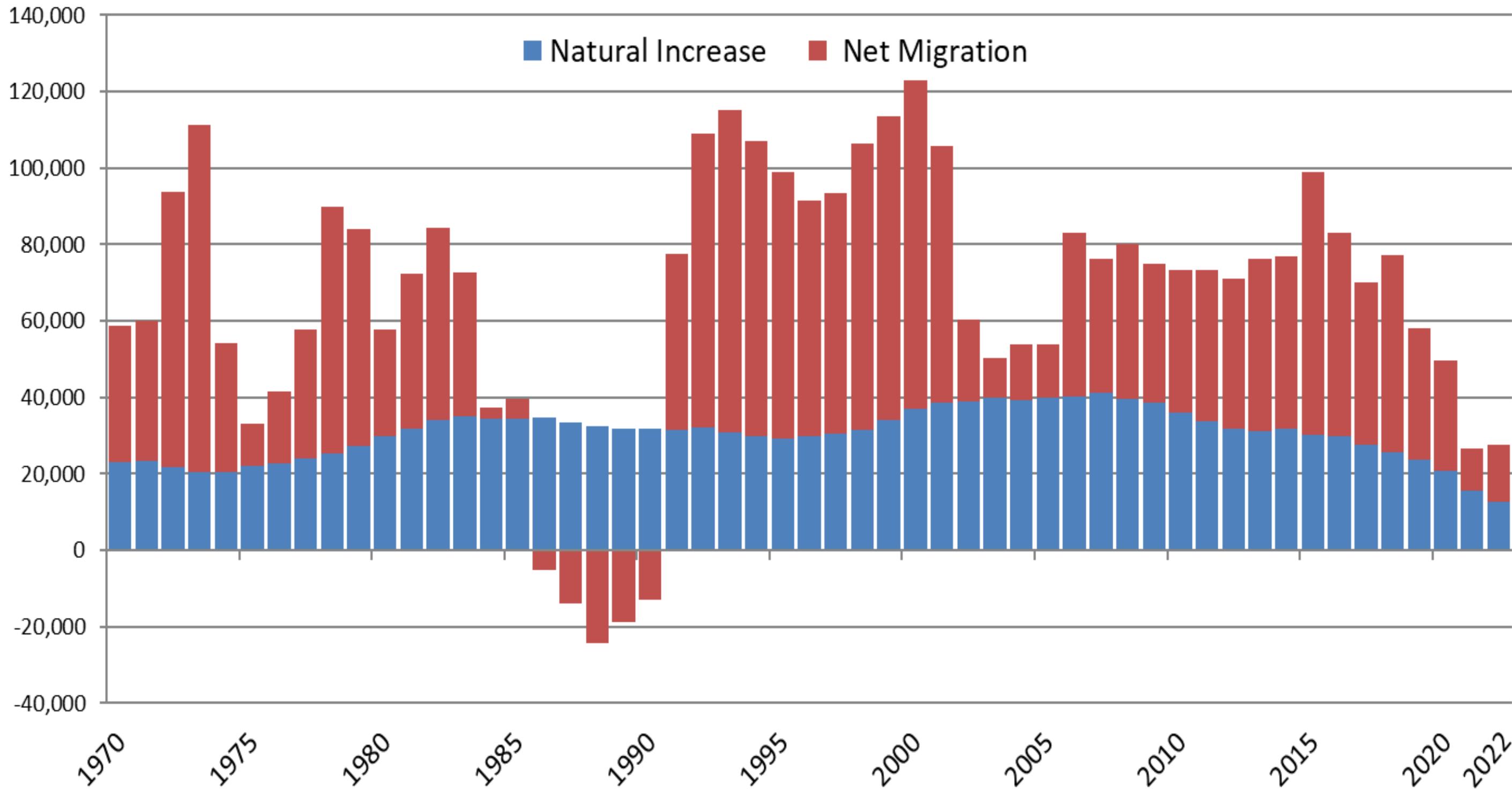
2020 to 2022 - Decreased to 75%, with a number of Denver Metro Counties losing population



COLORADO
Department of Local Affairs

Source: 2010 and 2020 Colorado State Demography Office
Population Estimates, Accessed March, 2023

Components of Colorado Population Change 1970-2022

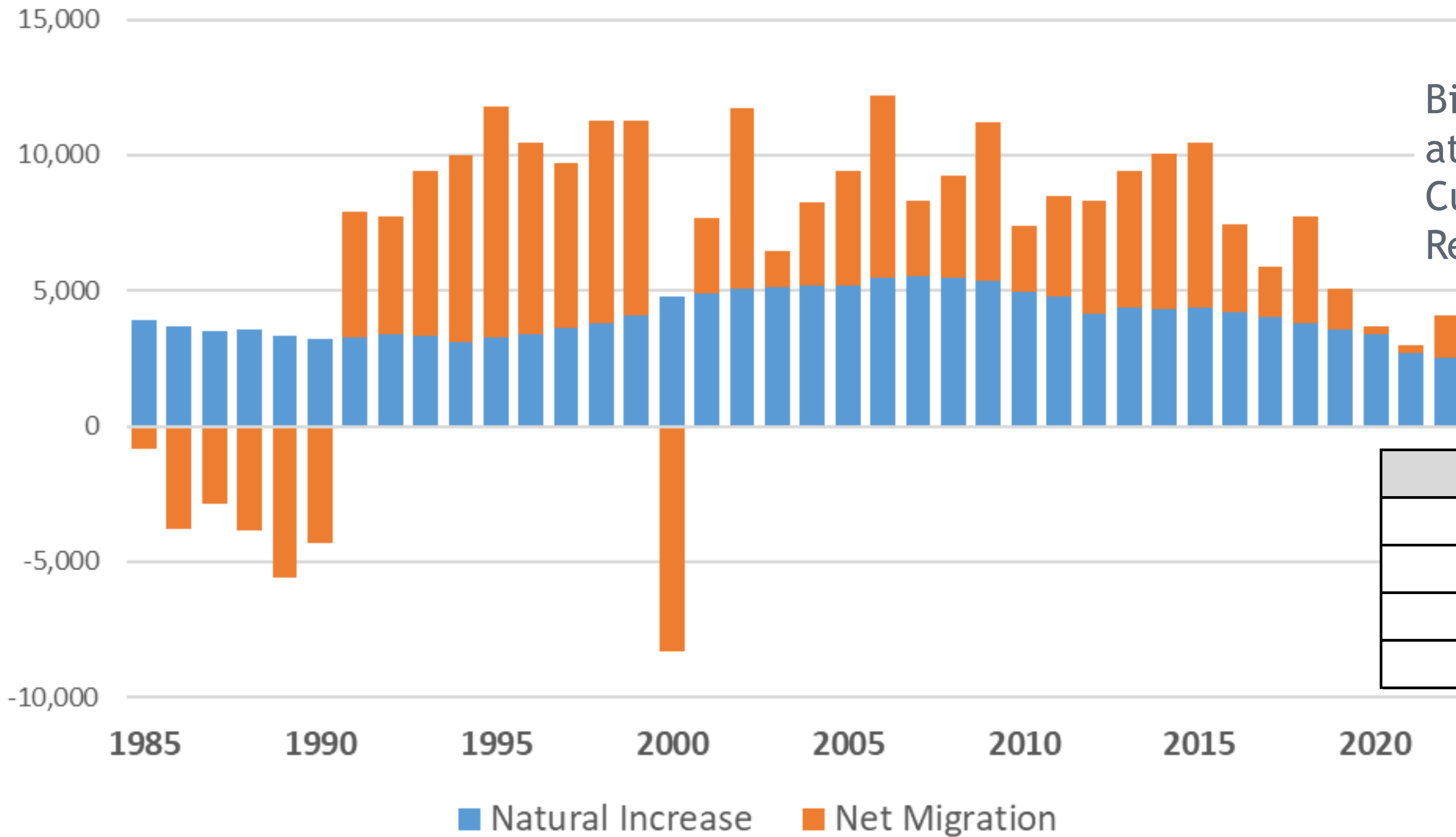


2010-2020	
Births -	648,000
Deaths -	362,000
Net Migration -	445,000

- CO population growth slows from an annual average of 74K to 26K



Adams Components of Population Change 1985 to 2022



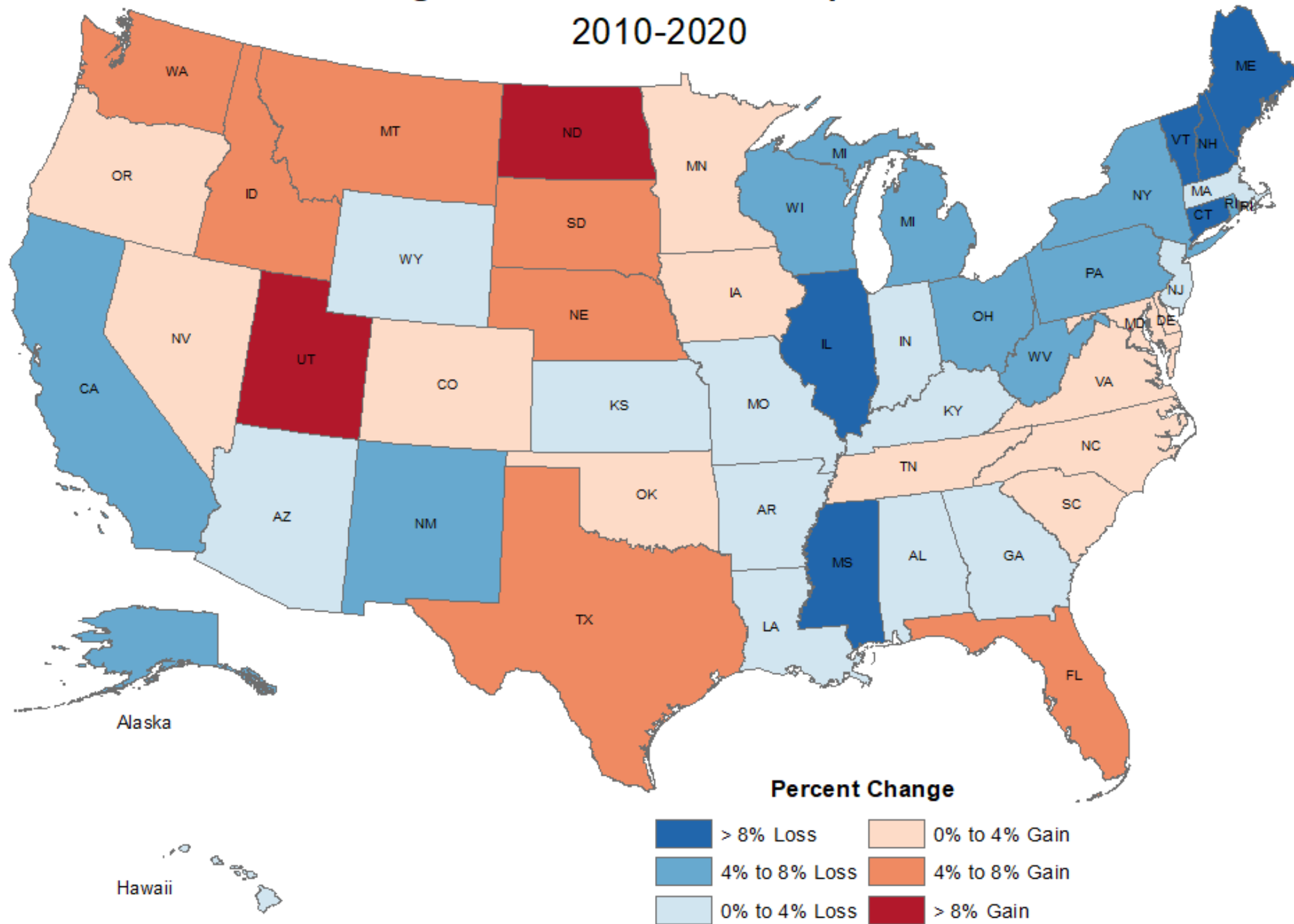
Births peaked in 2008 at 7,925.
Currently 6,838
Return to 7,900 in 2030

	Total Pop	Growth
1990	265,708	
2000	351,735	86,027
2010	443,711	91,976
2020	520,189	76,478



Change in Under 18 Populations

2010-2020



Source: US Census Bureau
Map by Colorado State Demography Office

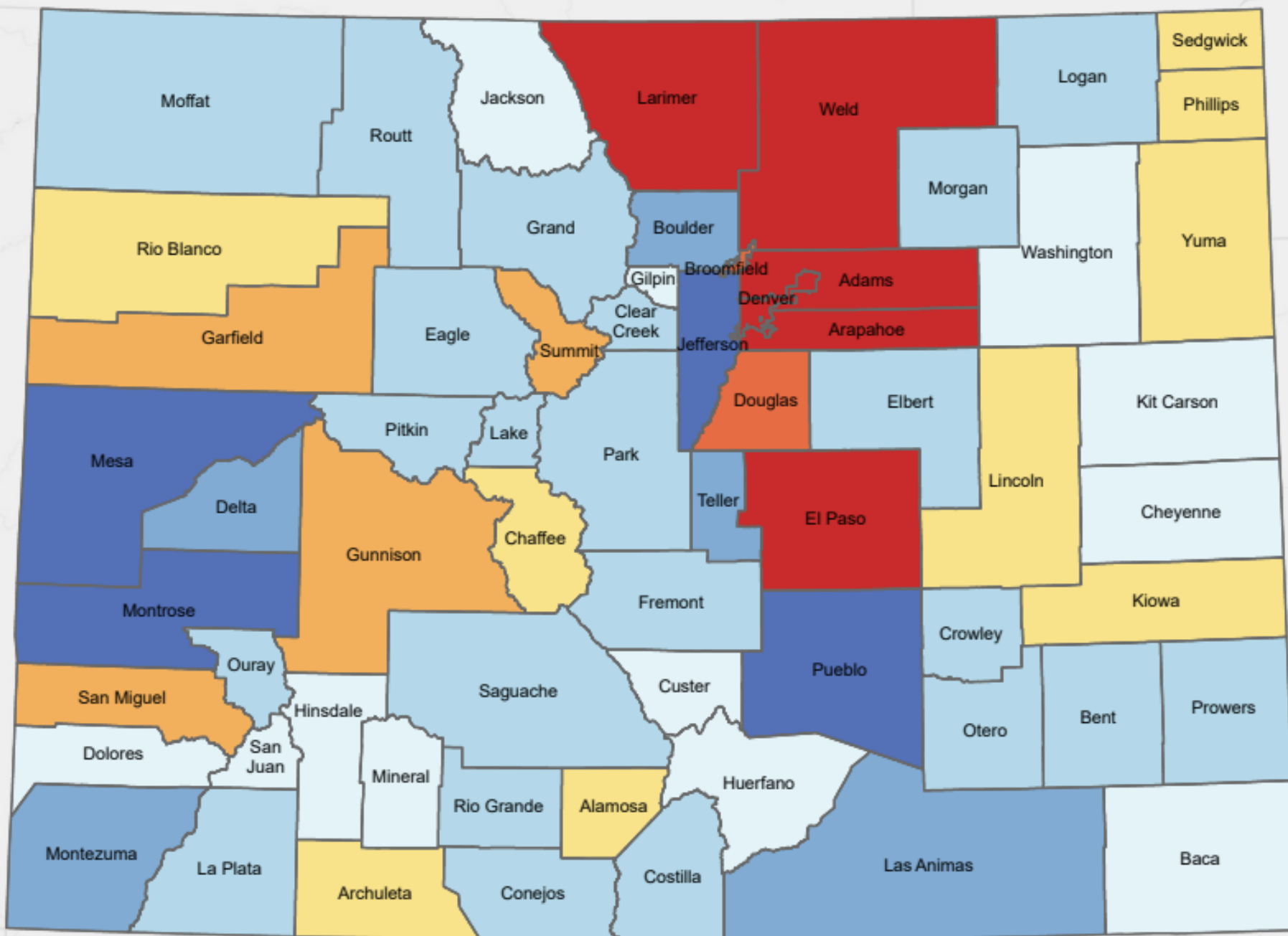
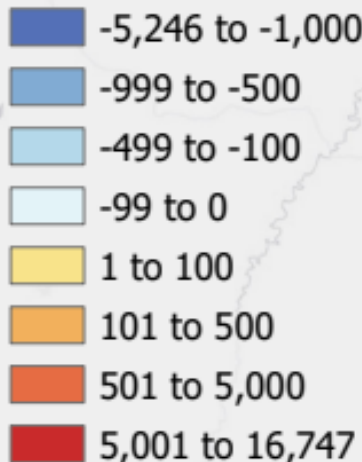
Created October 13, 2021

- Population Under 18 Declined by over 1,000,000 over the decade
- 27 states lost population under 18



Under 18 Population Change by County 2010 to 2020

Population Change



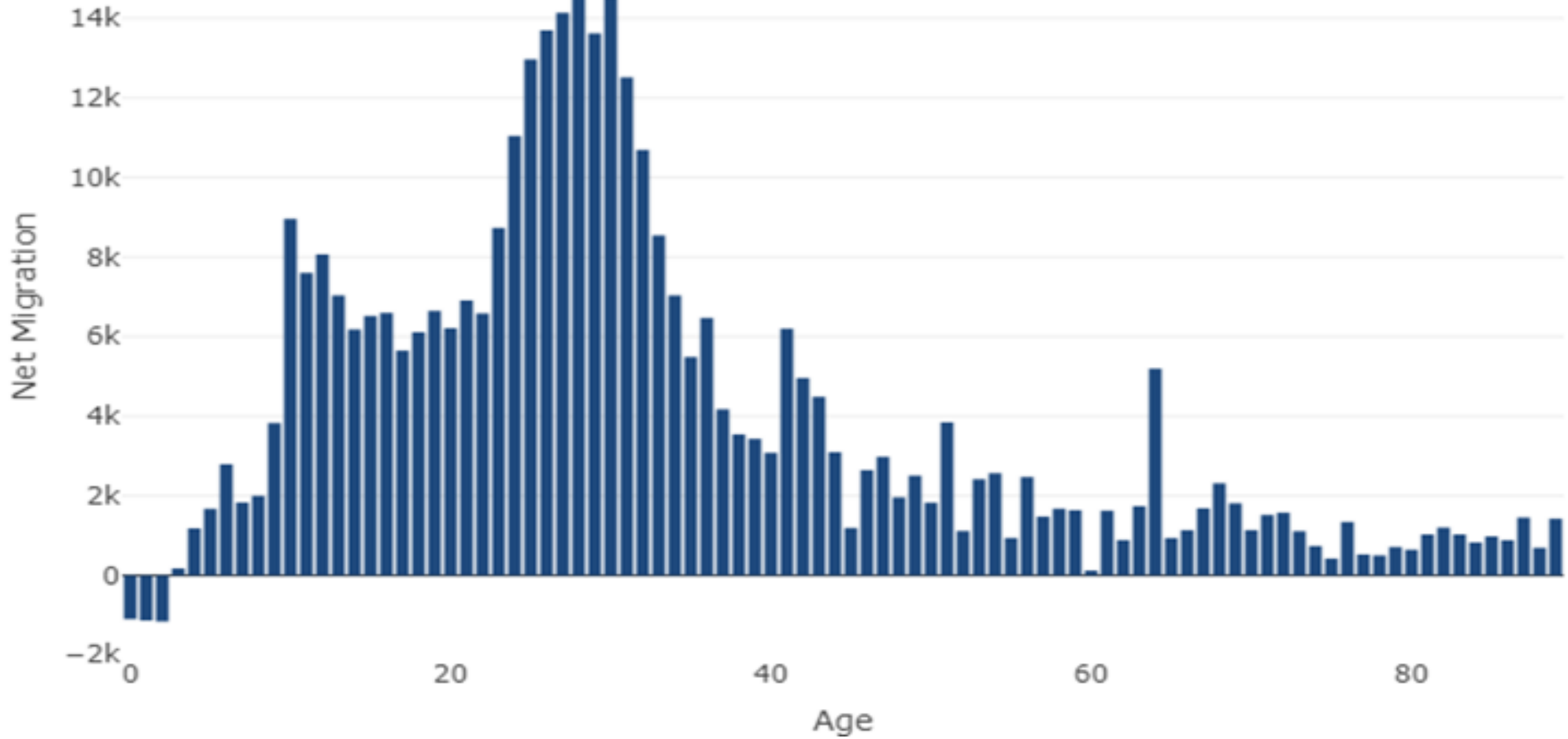
- Population Under 18 increased by 38K over the decade.
- Only 5% of the total 744,518 growth was from the under 18

Source: 2020 US Census

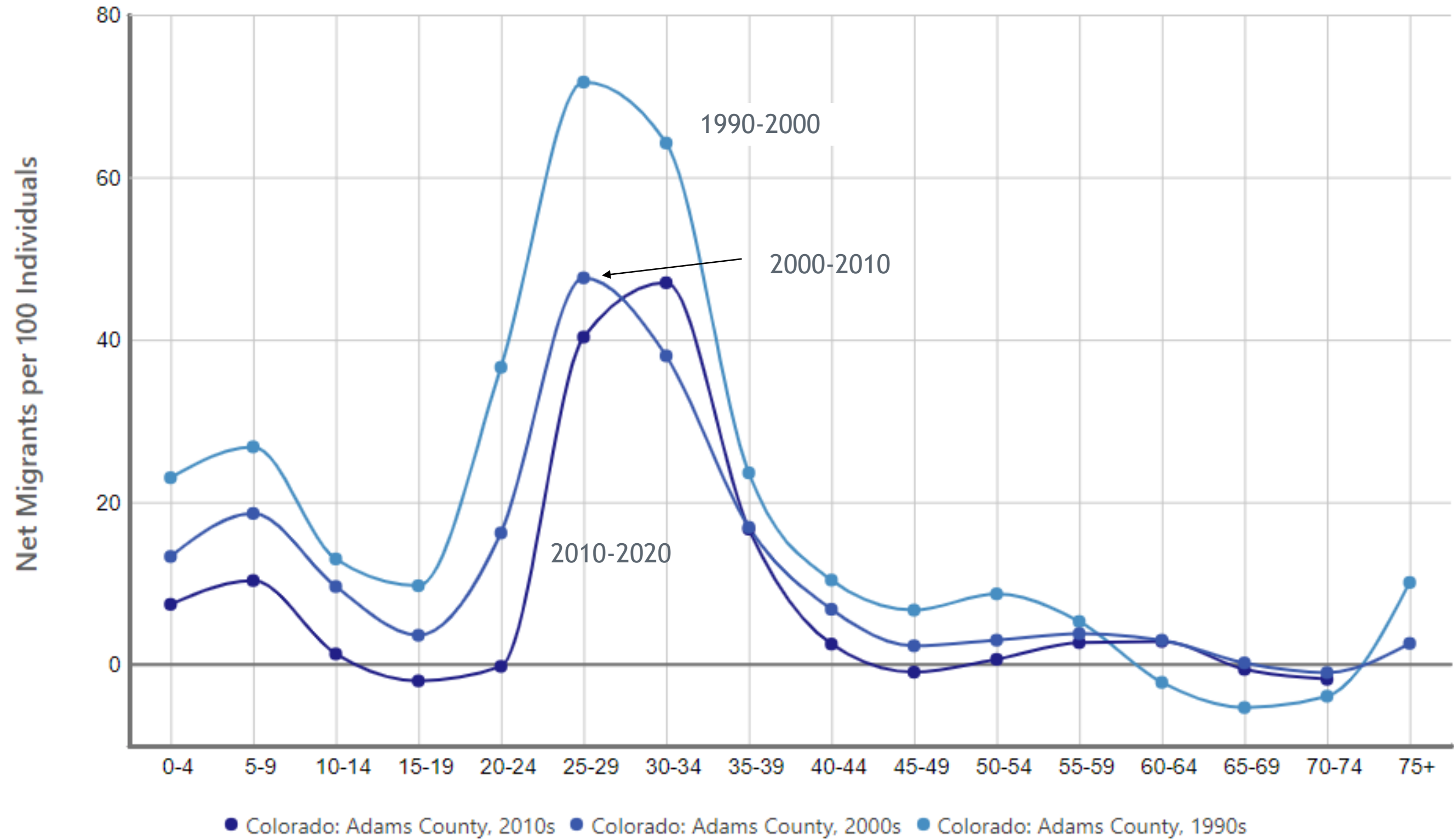
Arenaname	2020		Change		Percentage Change	
	Total	Age 0 to 17	Total	Age 0 to 17	Total	Age 0 to 17
COLORADO STATE	5,773,714	1,264,138	744,518	38,529	14.8%	3.1%
ADAMS COUNTY	519,572	133,301	77,969	7,178	17.7%	5.7%



Net Migration by Age, 2000 to 2010



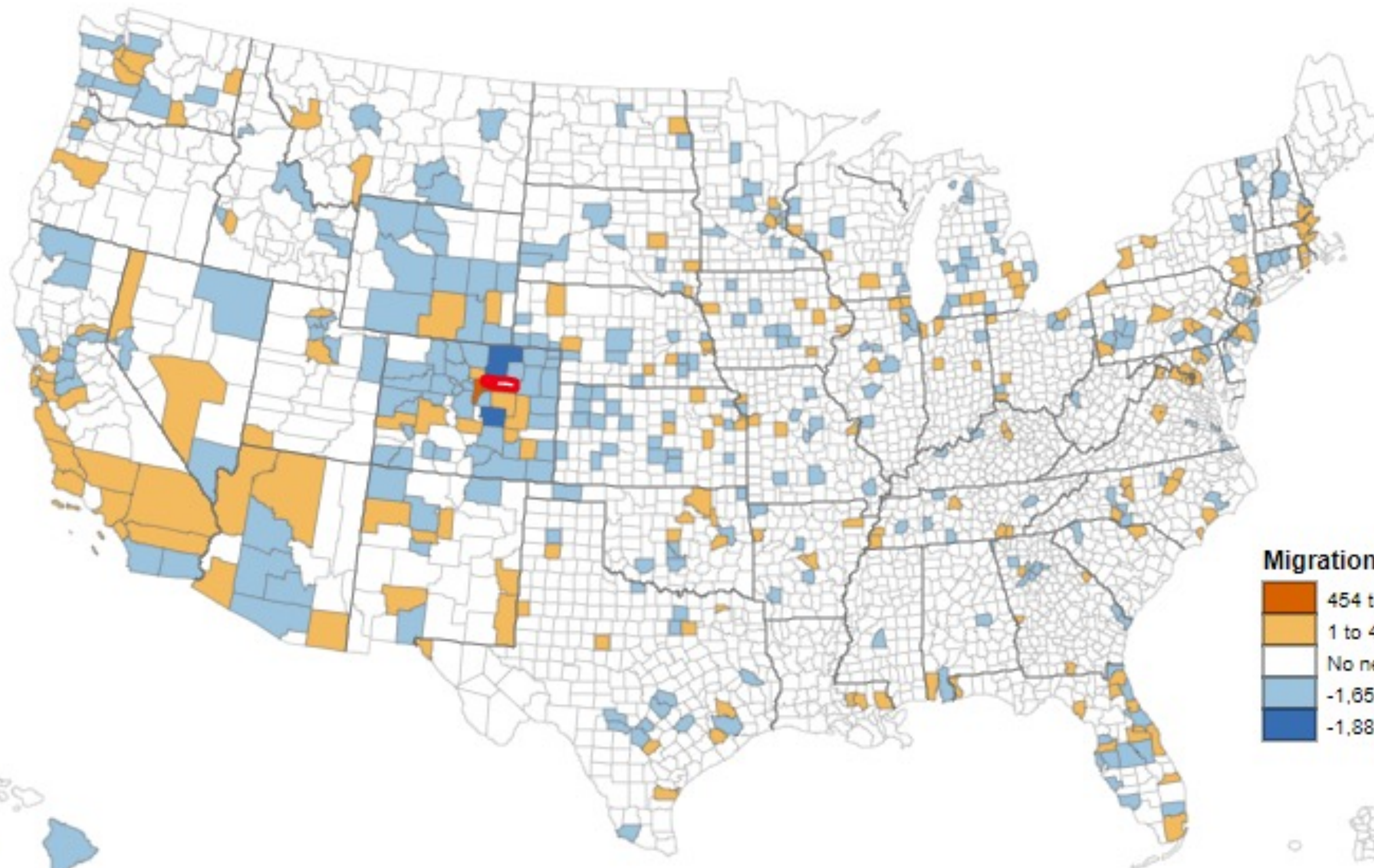
Net Migration by Age Adams County



Egan-Robertson, David, Katherine J. Curtis, Richelle L. Winkler, Kenneth M. Johnson, and Caitlin Bourbeau, *Age-Specific Net Migration Estimates for US Counties, 1950-2020*. Applied Population Laboratory, University of Wisconsin - Madison, 2023 (Beta Release). Web.



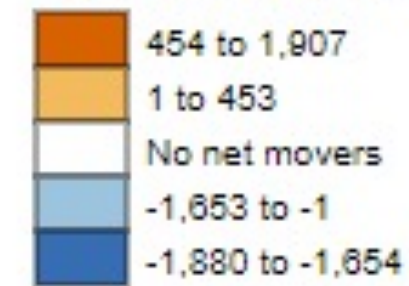
Total Net Migration Flows for Adams County, Colorado



Largest Net In:

- Jefferson
- California
- Arapahoe
- Denver
- Broomfield
- Boulder
- New York
- Kansas
- Tennessee

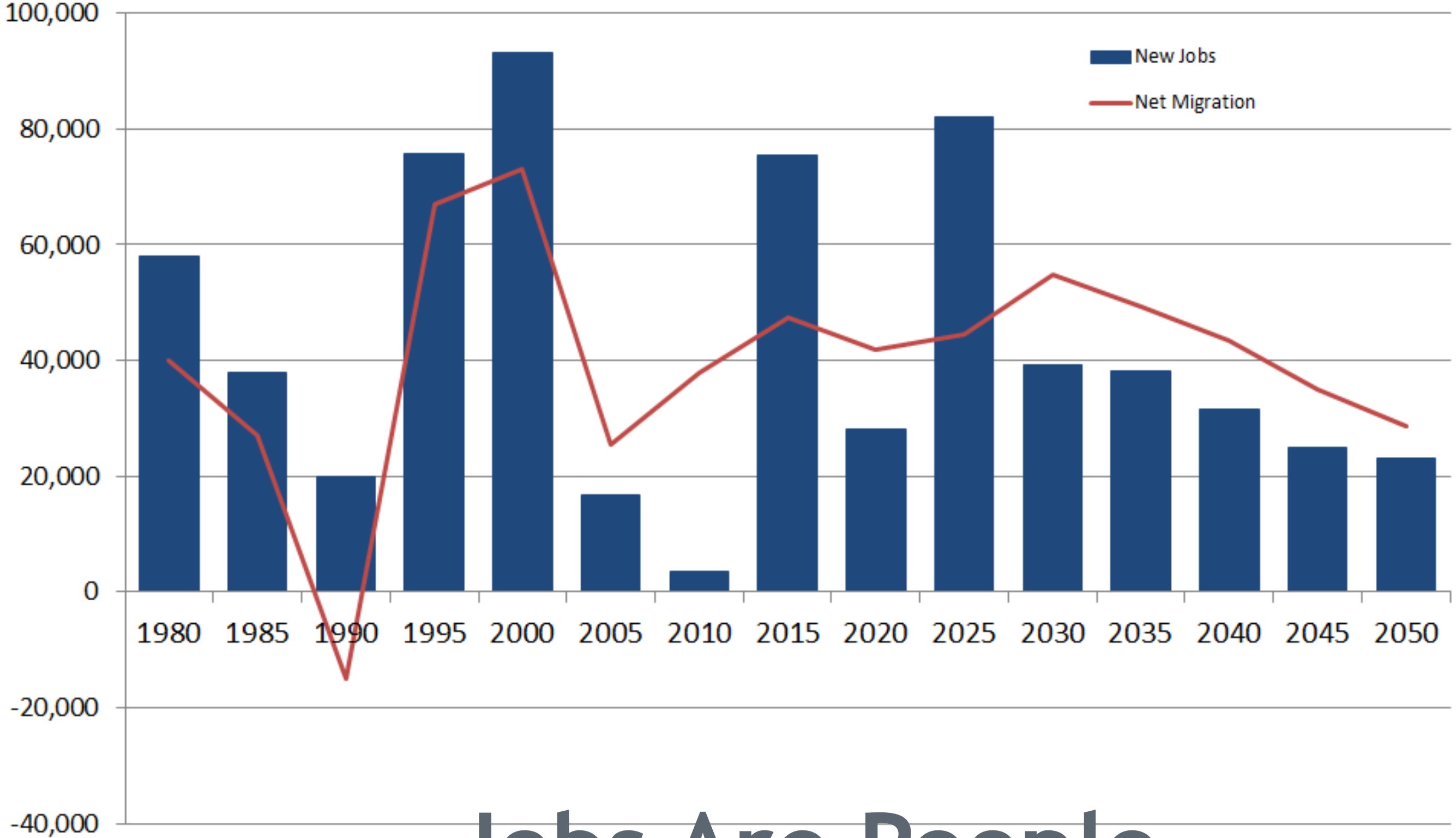
Migration by County



Source: U.S. Census Bureau, 2016-2020 5-year American Community Survey



Colorado New Jobs and Net Migration

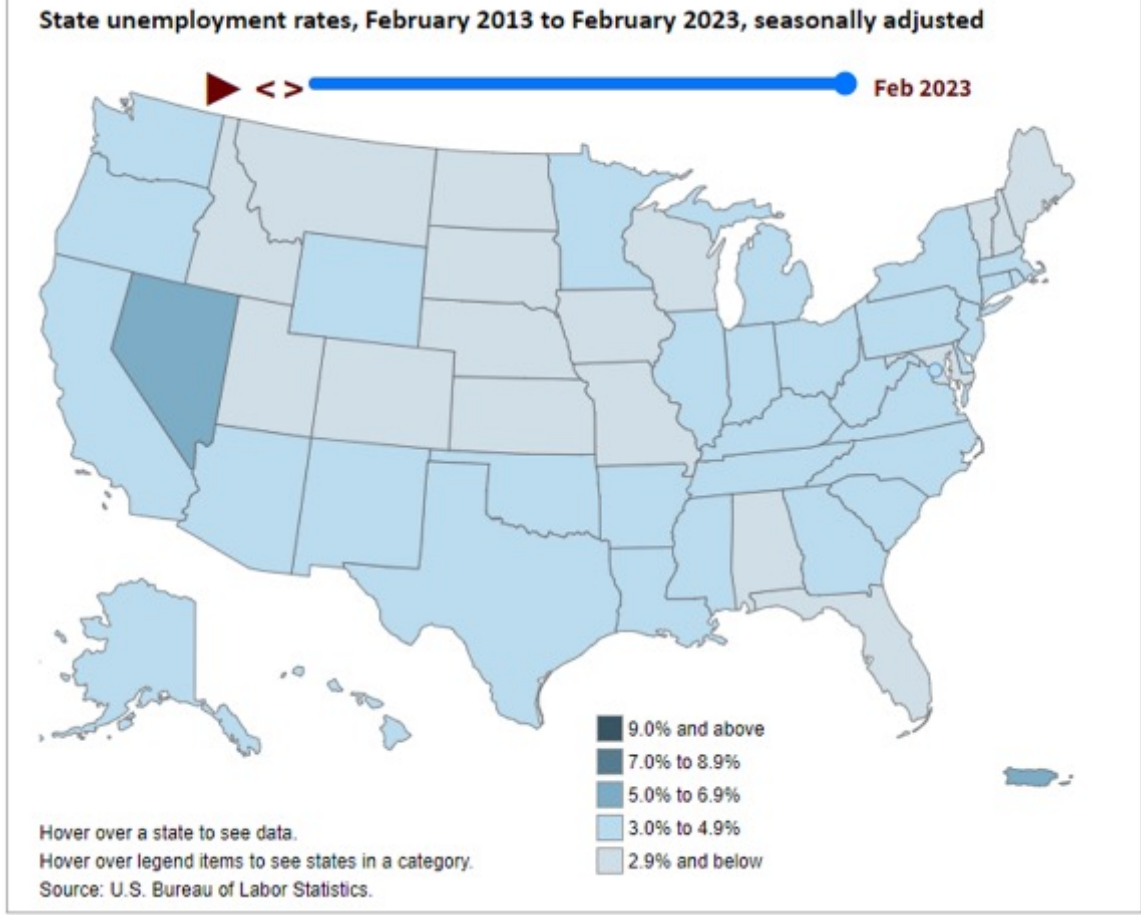
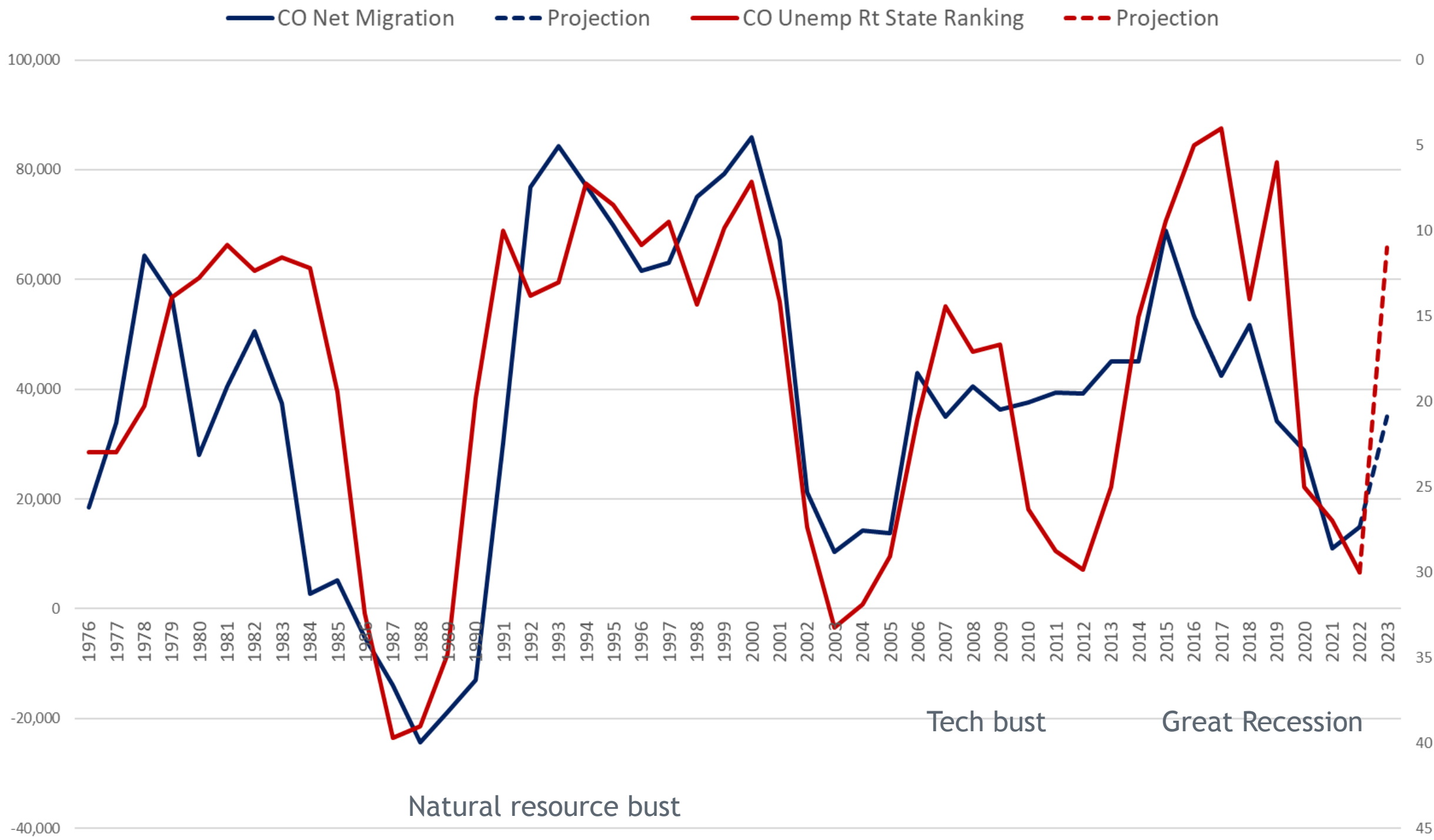


Jobs Are People



Evaluation of net migration

Colorado Unemployment Rate State Rank vs. Net Migration V22



February 2023 Colorado #14

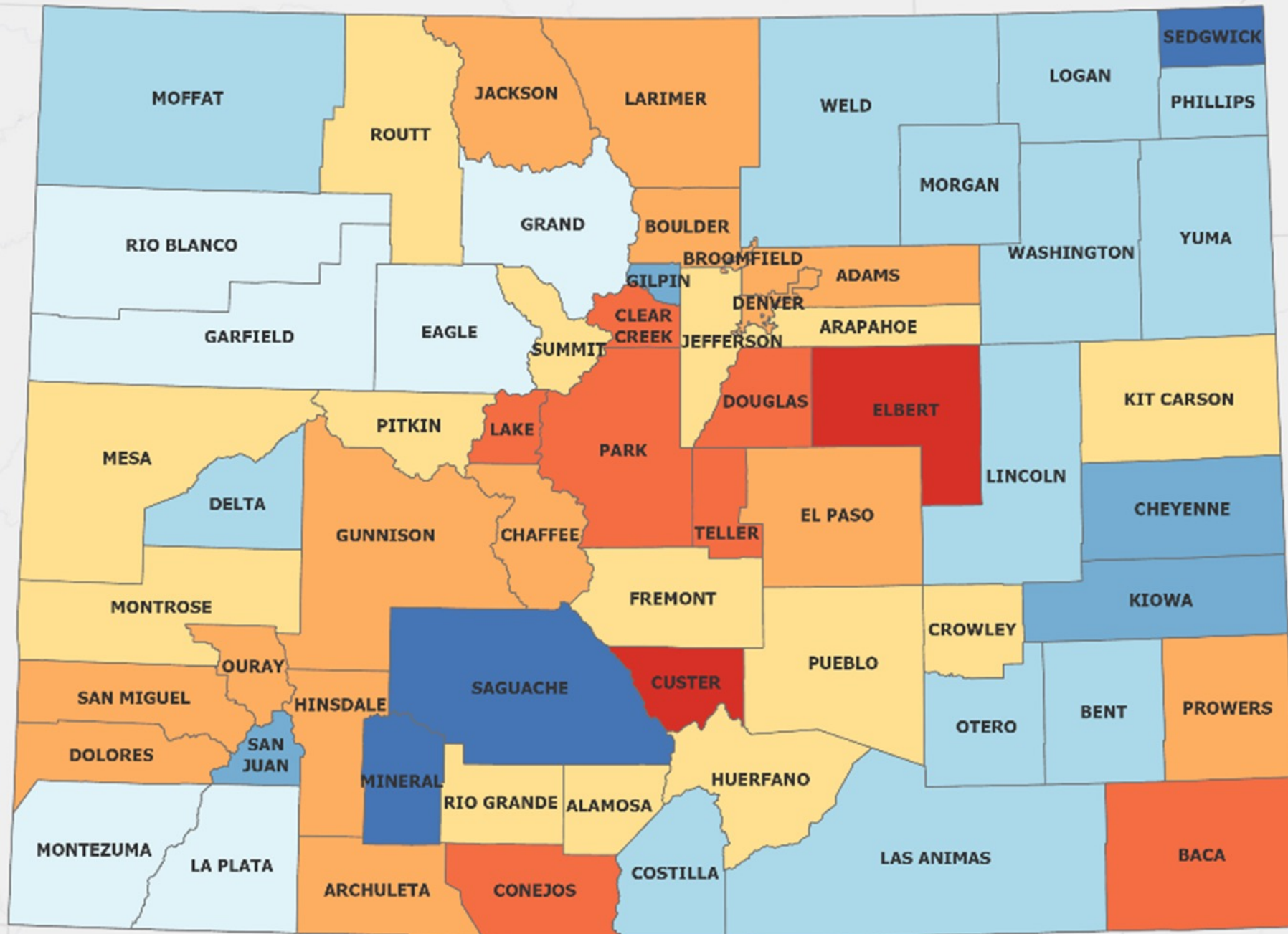


Percent Change in Number of Jobs

3rd Quarter 2019 - 2022

Percent Change

- > 10% Loss
- 5% to 10% Loss
- 2% to 5% Loss
- 0% to 2% Loss
- 0% to 2% Gain
- 2% to 5% Gain
- 5% to 10% Gain
- > 10% Gain



Adams Summary:

- Second largest growth in jobs 2002-2021
- 4% above pre-COVID levels of employment

Top Growing Industries

- Transportation and Warehousing
- Professional and Technical Services
- Administrative and Waste Services
- Wholesale Trade
- Educational Services

Source: Colorado Department of Labor, Quarterly Census of Employment and Wages

May 2023



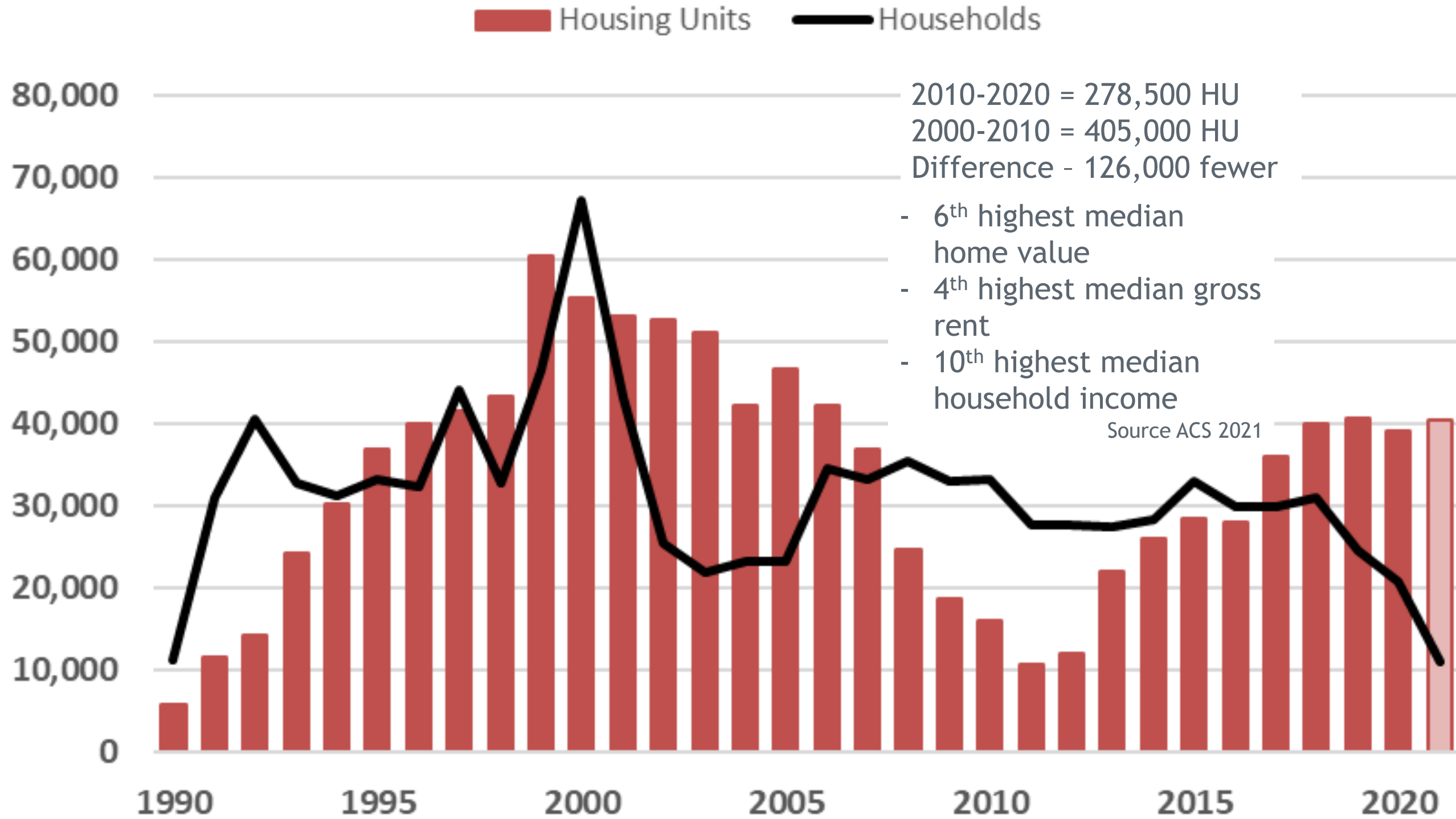
COLORADO
Department of Local Affairs

Housing

Supply vs. Demand

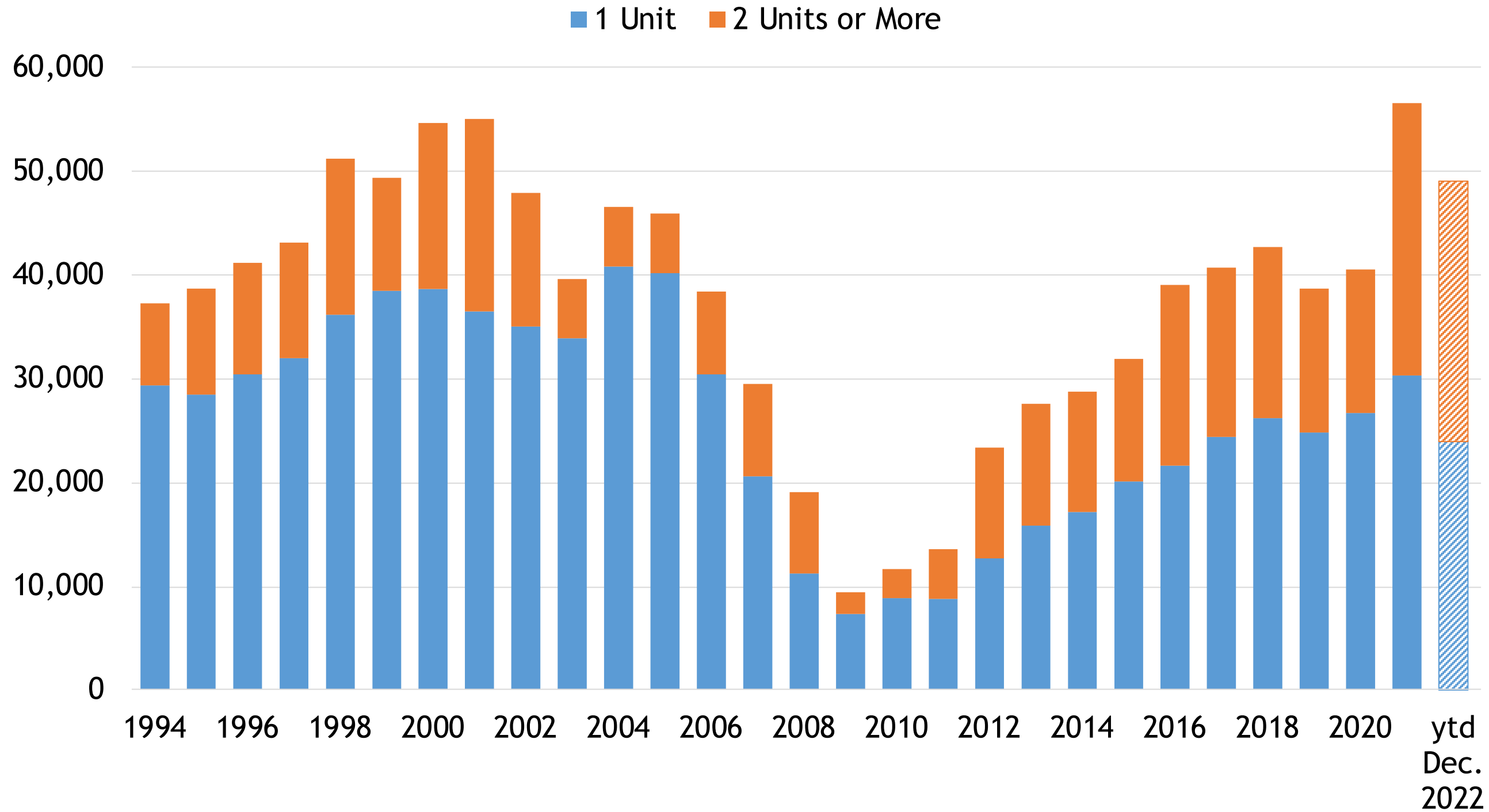


Colorado Annual Housing Units and Household Growth



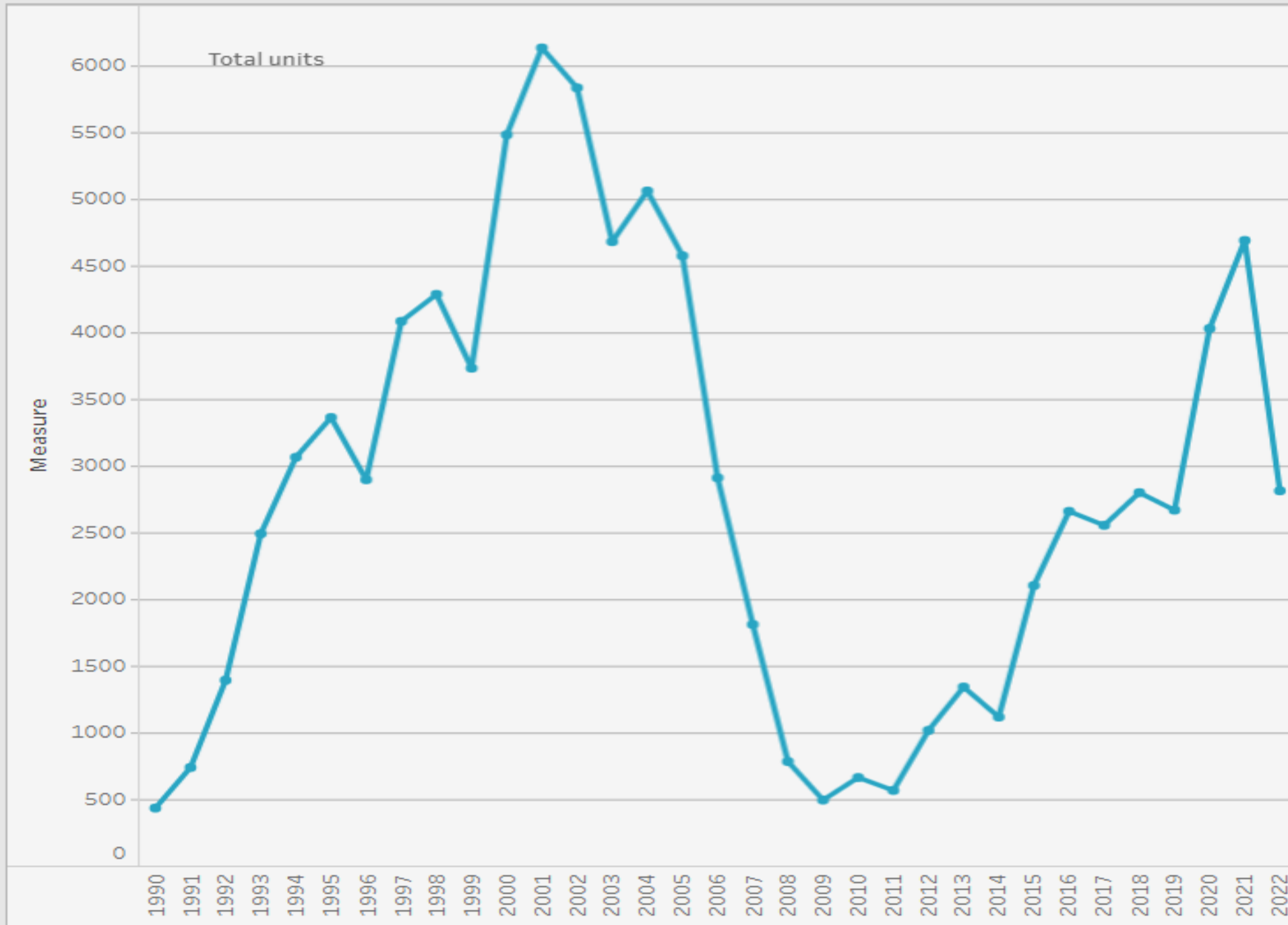
New Residential Building Permits

Colorado



U.S. Census Bureau Building Permits Survey New Privately Owned Housing Unit Authorizations

Measure (time series only):
 Year:
 Period:
 Geographic Type:



State:
 County:
 Place:

Location Name: Adams County



U.S. Department of Commerce
U.S. CENSUS BUREAU
census.gov

Source: U.S. Census Bureau Building Permits Survey
<<https://www.census.gov/construction/bps/>>



COLORADO
Department of Local Affairs

Factors Influencing Housing

Supply

- Fewer units built 2010-2020
- Slow industry to start and stop
- Supply chain and tight labor
- Public will - NIMBY, Anti growth/density
- Water, infrastructure
- Financing
- 40K+ per year since 2018

Demand

- Job growth = workers = people
- Aging - smaller household size
- Millennials - Prime home buying and second home buying
- Gen Z - entering first time apt/home
- More money - didn't travel or have big wedding, stimulus, interest rates.
- Investors - institutional and cannabis firms (often holding vacant)



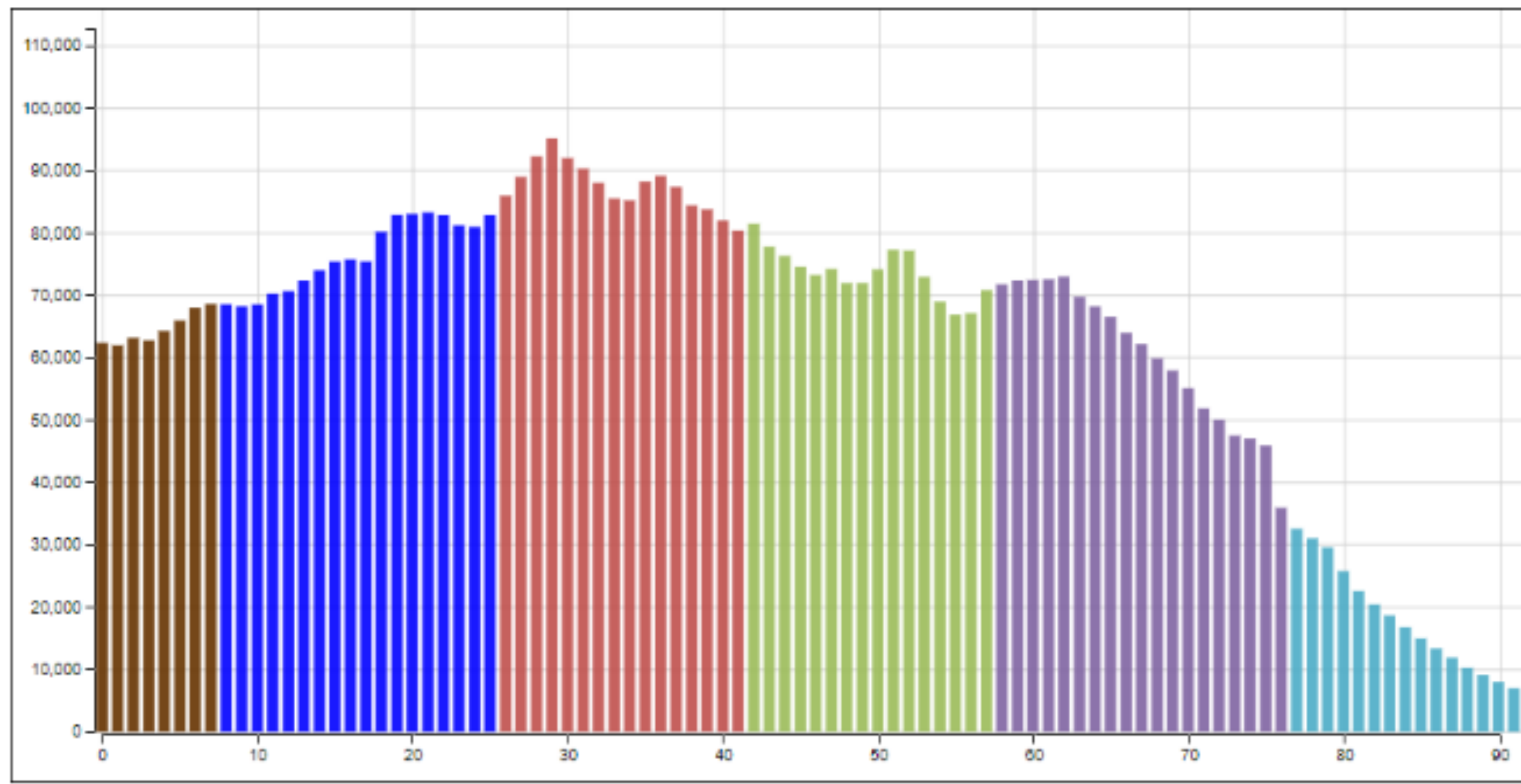
Age Matters

- Preferences - where people shop and what they buy.
- Housing - type, size, mobility
- Labor Force
- Income
- Service Demands



Colorado

2022



- Generation X (1965 - 1980)
- Baby Boomers (1946 - 1964)
- Silent Generation (1928 - 1945)
- Greatest Generation (- 1927)
- Future Generations (2030 -)
- Generation Alpha (2015 - 2029)
- Generation Z (1997 - 2014)
- Millennials (1981 - 1996)



Adams

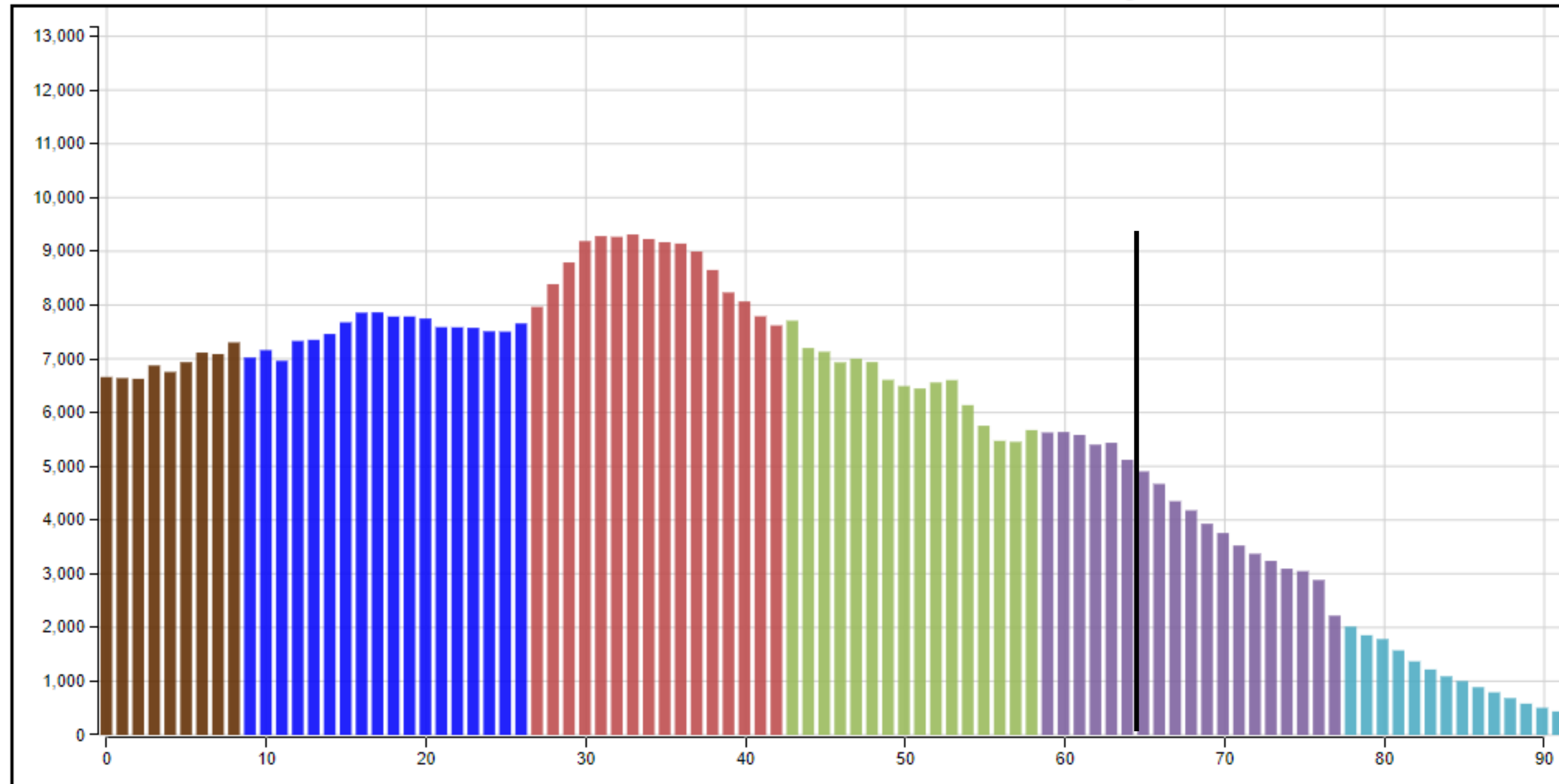
2023

Animate

Download Image

Adams County

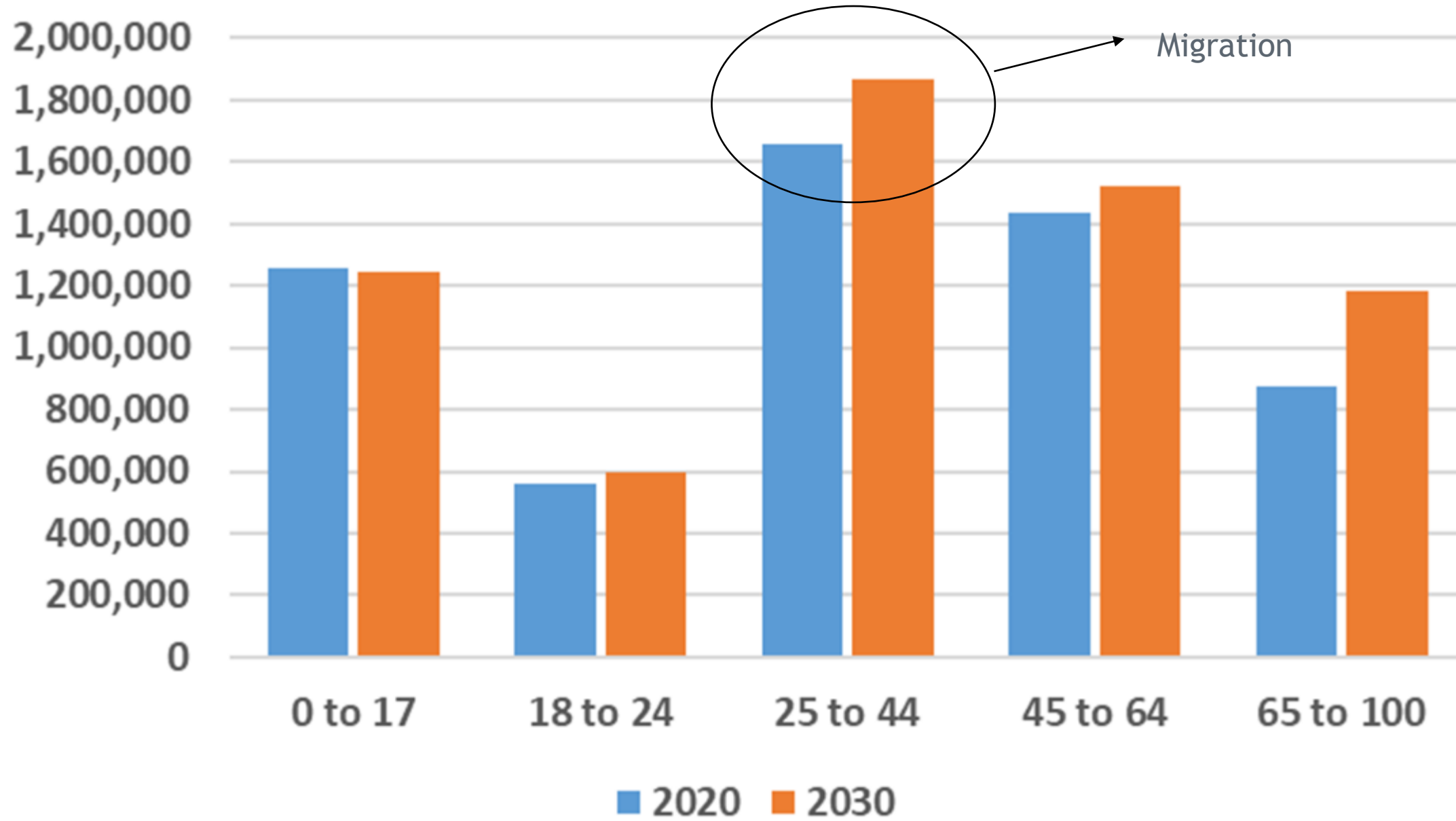
2023



- | | | | |
|-----------------------------|--------------------------------|---------------------------------|------------------------------|
| Generation X (1965 - 1980) | Baby Boomers (1946 - 1964) | Silent Generation (1928 - 1945) | Greatest Generation (- 1927) |
| Future Generations (2030 -) | Generation Alpha (2015 - 2029) | Generation Z (1997 - 2014) | Millennials (1981 - 1996) |



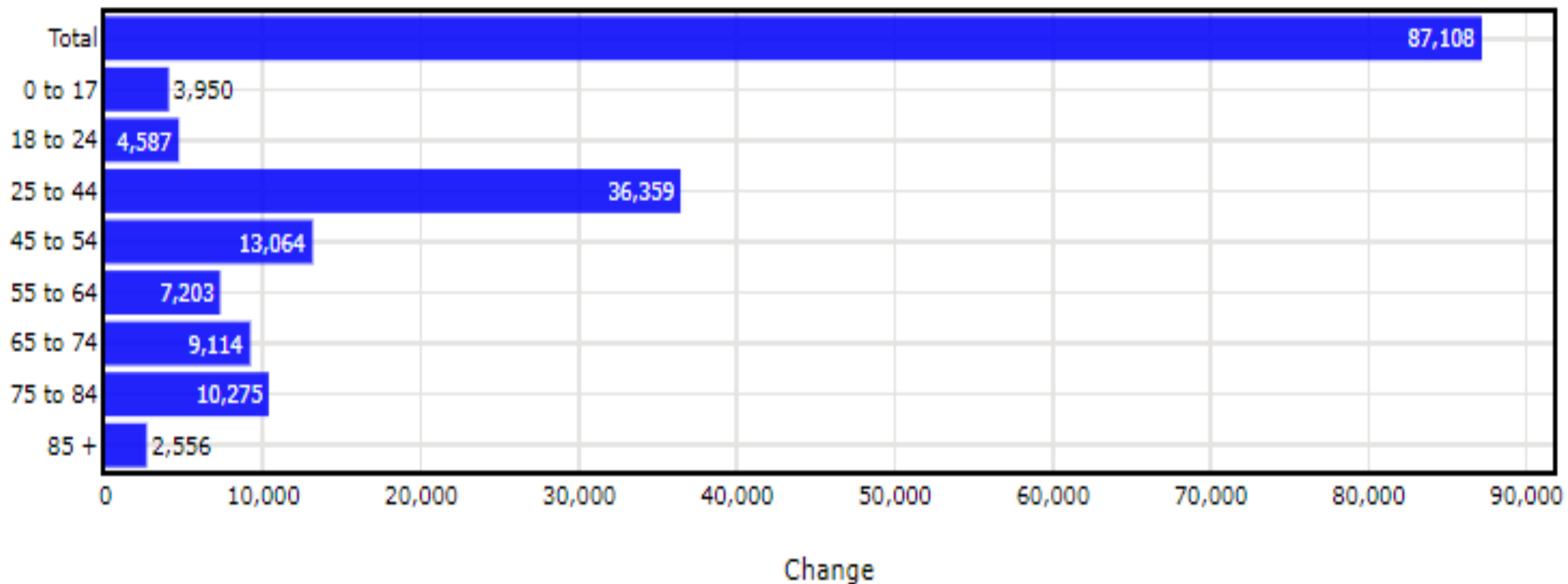
Colorado Population By Age



	0 to 17	18 to 24	25 to 44	45 to 64	65 to 100	Total
2020	1,255,749	561,243	1,657,073	1,437,494	872,581	5784140
2030	1,244,184	596,781	1,868,099	1,524,336	1,182,816	6416216
Change	-11,565	35,538	211,026	86,842	310,235	632,076
Pct Ch	-0.9%	6.3%	12.7%	6.0%	35.6%	10.9%



Projected Population Change by Age Group, 2021 to 2031, Adams County

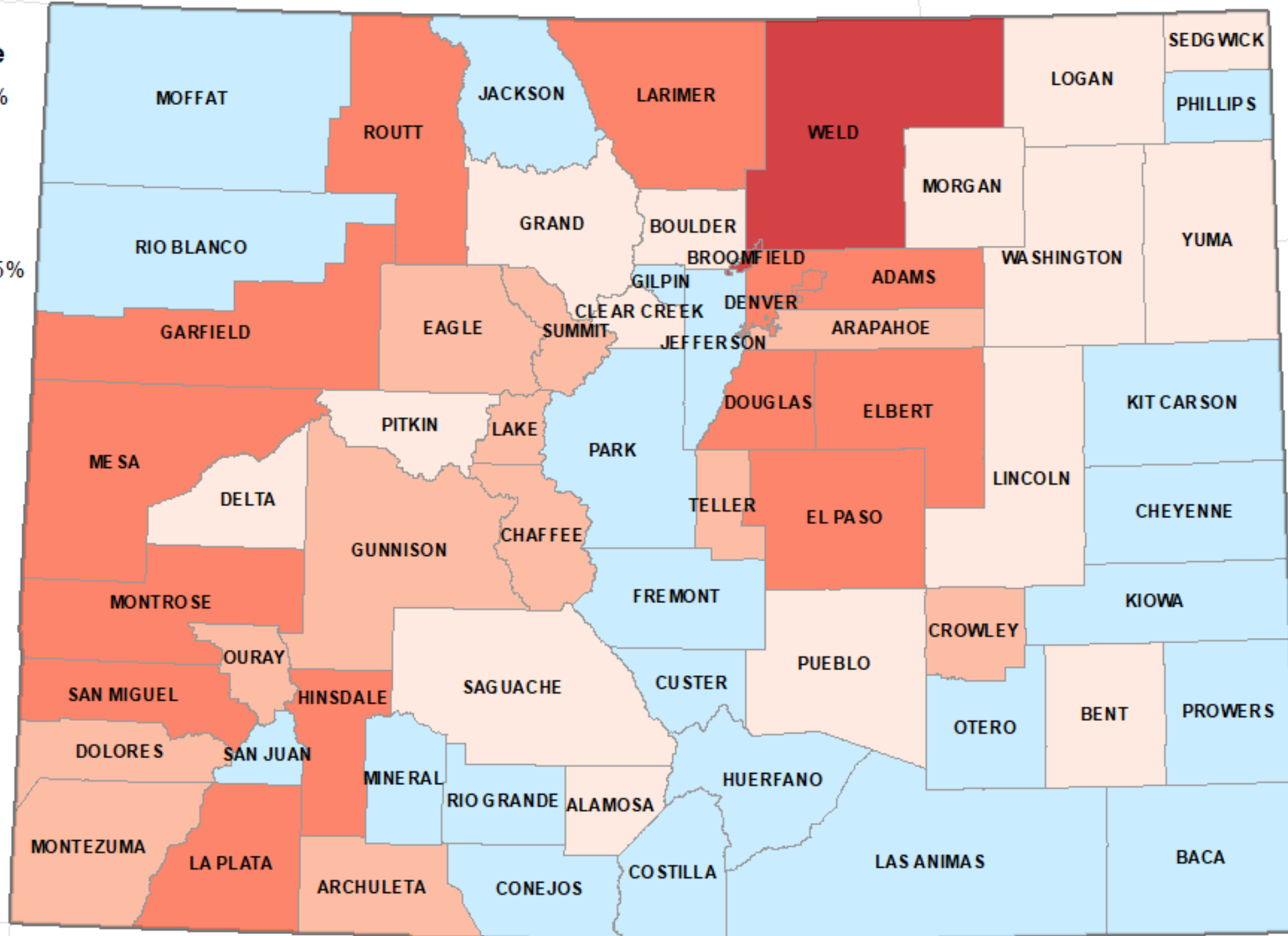
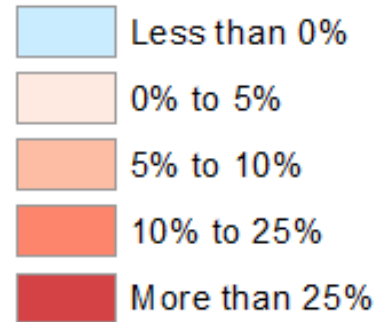


Data and Visualization by the Colorado State Demography Office. Print Date: May 09, 2023



Forecast Change in the Working Age Population (Ages 16 - 64) 2020 - 2030

Percent Change



Colorado State Demography Office, 10/20/2021



Implications From Age and Aging

- Consumer demand - job creation, occupations, wages
- Labor force - older, retirements
 - Slower growth in working age - especially after 2027
 - Look at ways at encouraging folks to (re)enter the labor force
- 45% of growth this decade will be in the 65+ cohort
 - 400K retirees
- Housing - household size, mobility, owners, accessibility
 - Retires aging in place.
 - Where will new workers live?



Race and Ethnicity

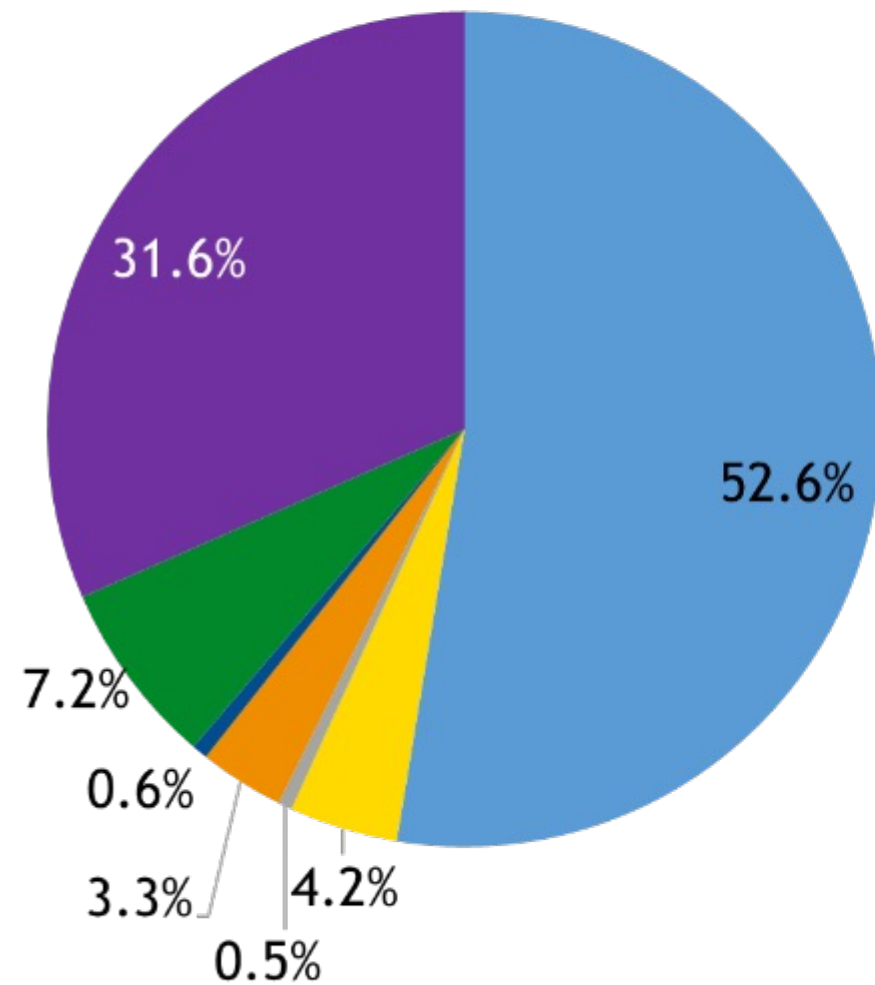
Becoming More Diverse



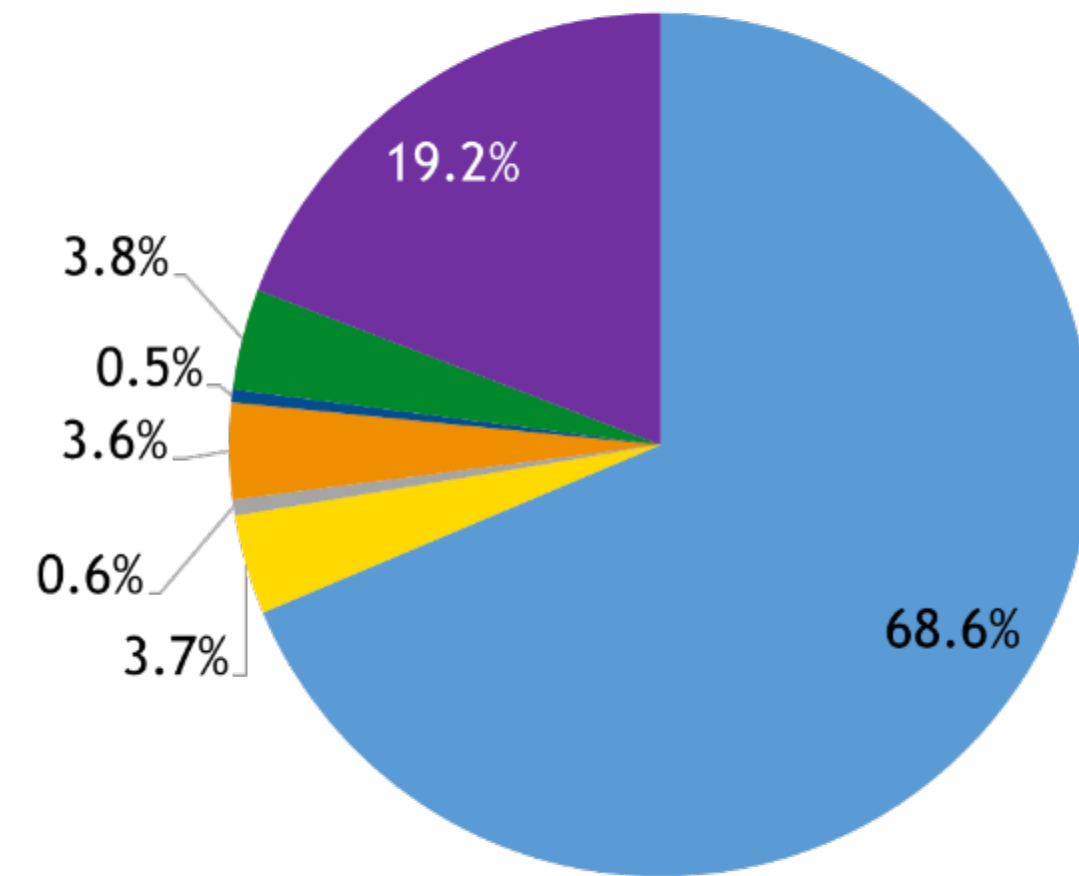
Race and Ethnicity by Age Group

Colorado - 2020 Census

Under 18 Years
(Children)



18 Years and Over
(Adults)

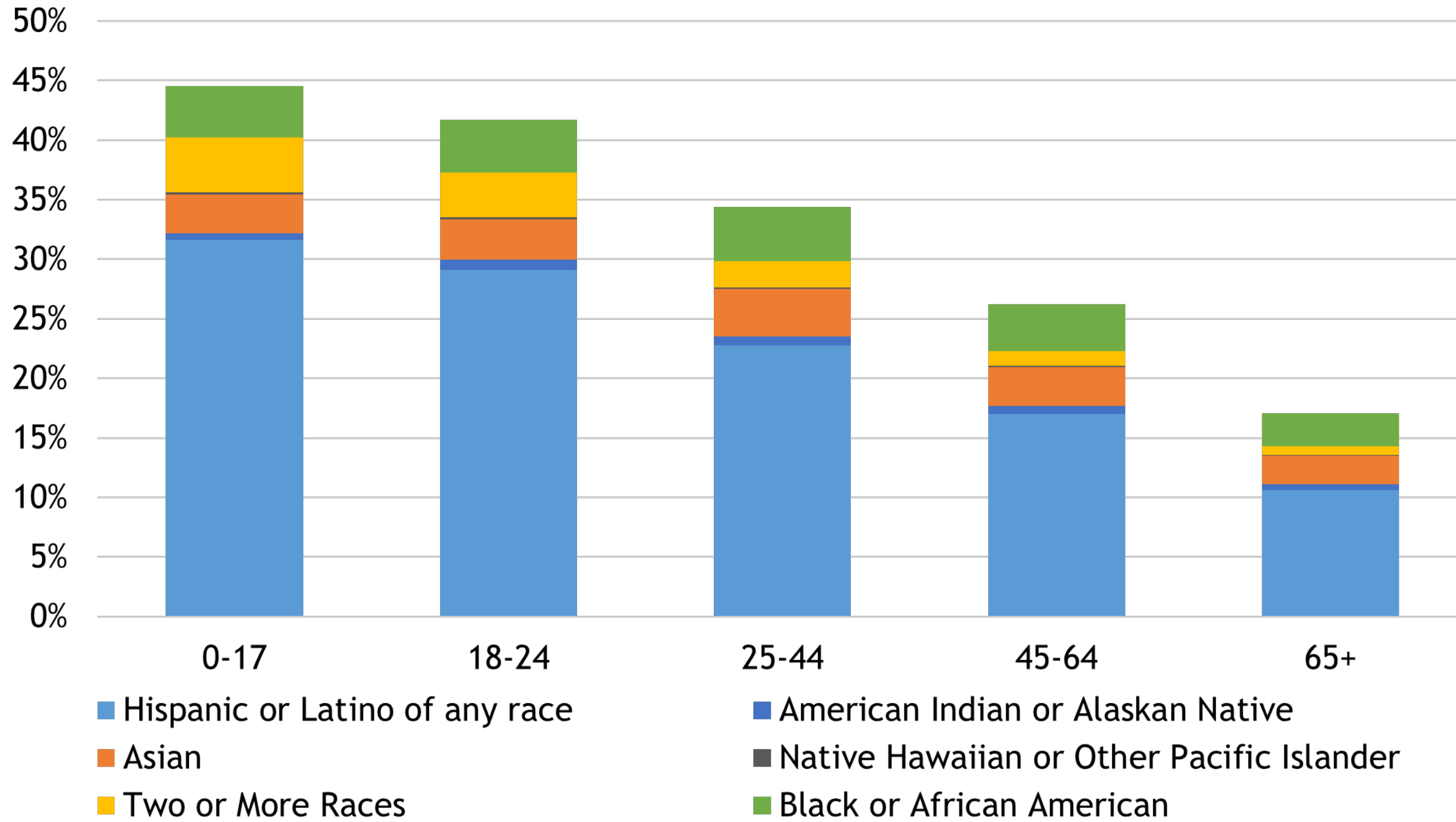


- White Alone not Hispanic
- Black/African American Alone not Hispanic
- American Indian & Alaska Native Alone not Hispanic
- Asian/Pacific Islander Alone not Hispanic
- Some Other Race Alone not Hispanic
- Two or More Races Total not Hispanic
- Hispanic/Latino Origin (of any race)



Diversity by Age

2020 People of Color Share of Population by Age



Forecast Factors

- Labor Force - National Competition
 - Migration/Mobility slowing, International slowed
 - Slowing young adults after 2027
 - Aging - growth in retirees 400K this decade
 - Marginally Attached - day care, senior care
 - Growth in Race and Ethnic Diversity - entrants
 - Growth in Gig - Transportation Jobs (flexibility)
 - Telework - Complement/Competition.
 - Housing and other community services
- Economy
 - Consumer Demand, Age, Income
 - Jobs = People = Housing



People Based Economic Development

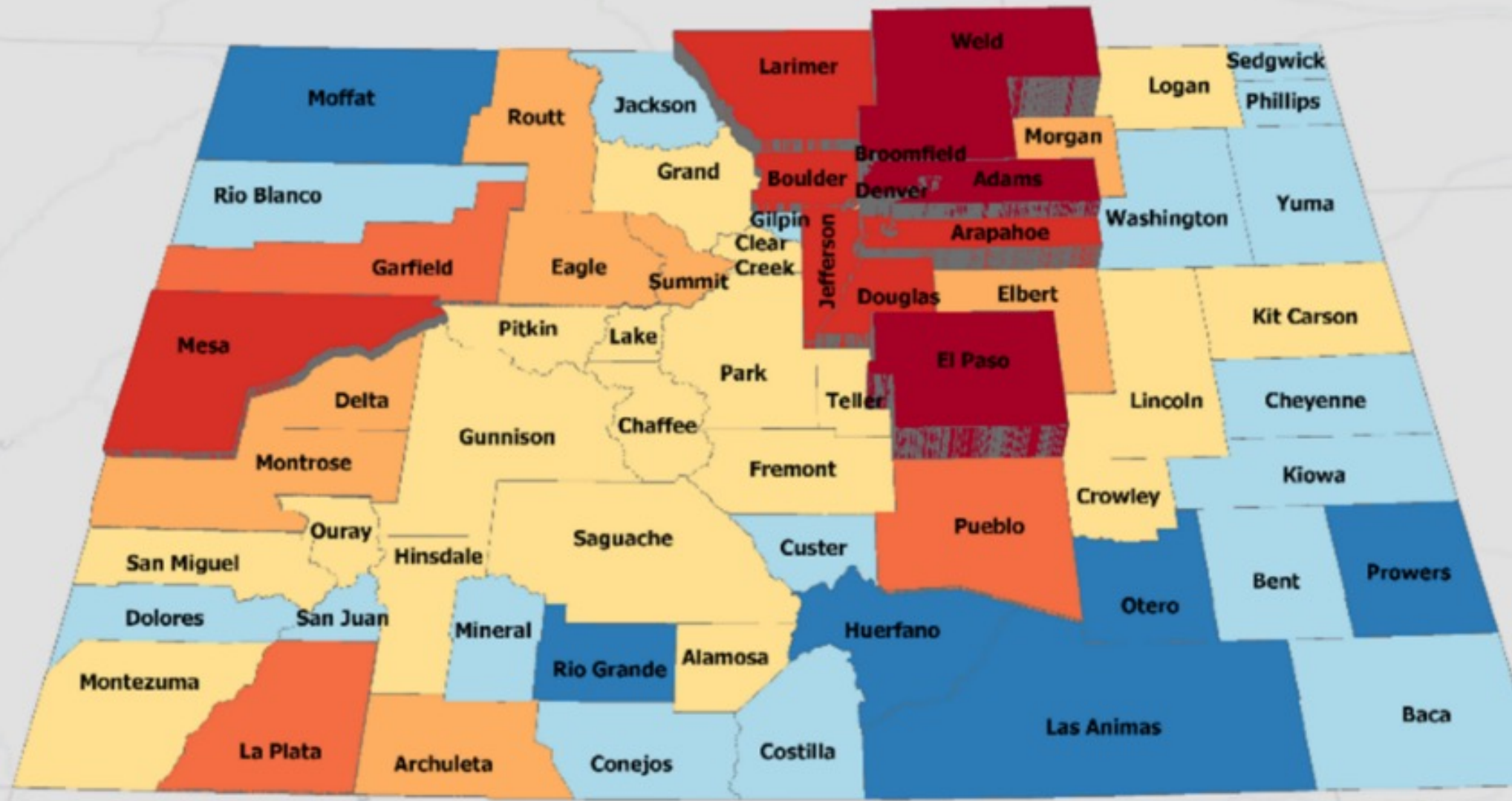
- Reimagine - Intentional and strategic
- Researched
- Additive vs. Poached
- Employee centered (first time since 60s)
- Community Services - Housing, Day Care
- Increase labor force participation at all ages - creative.
 - <24 and >55
 - People with Disabilities
 - People of Color
 - Formerly incarcerated



Projected Population Change 2020 - 2050 5.7 to 7.5 Million

Change 2020-2050

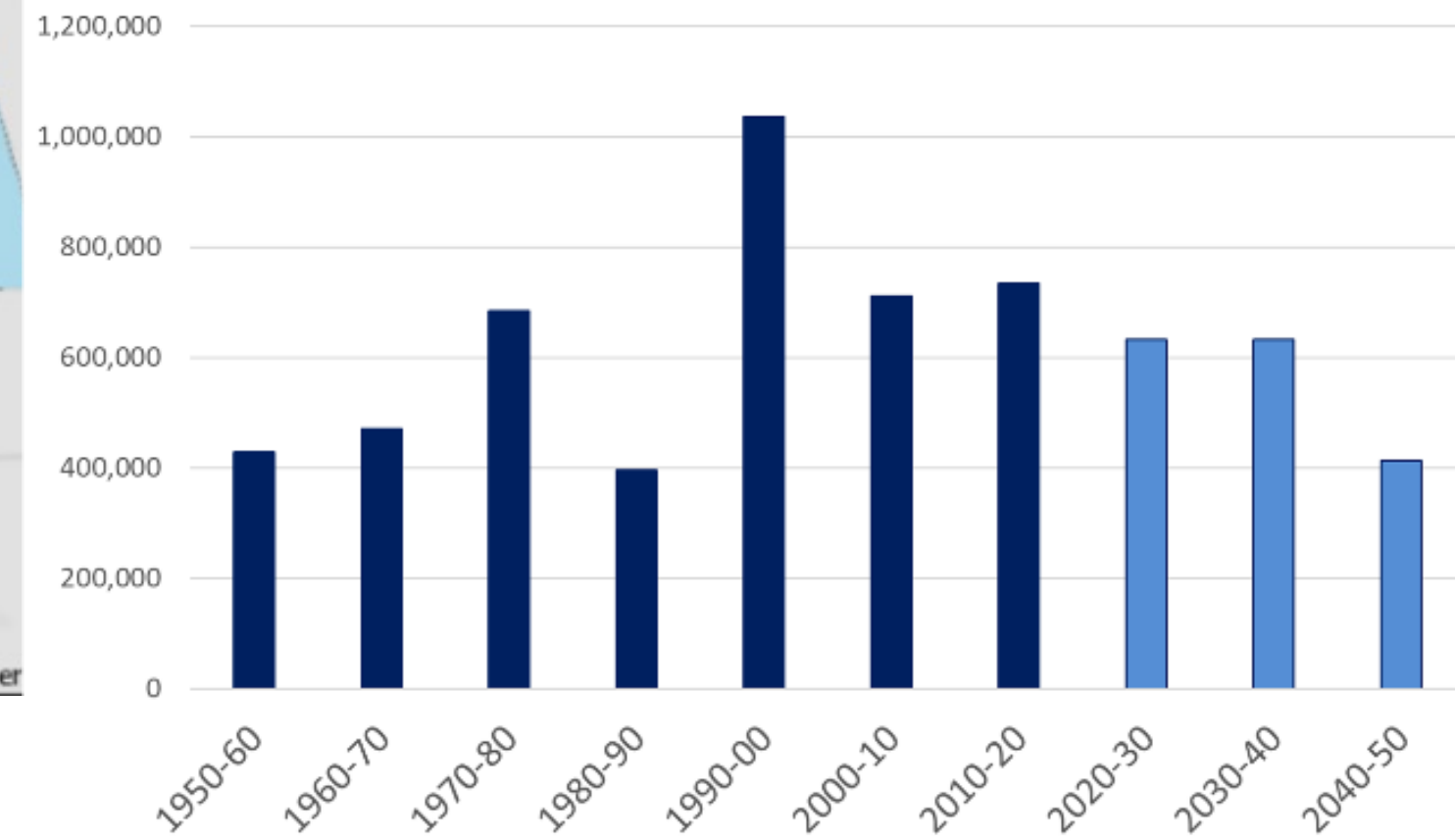
State: 1.8 million
 Front Range: 1.6M
 Western Slope: 190K
 Central Mtns: 1K
 San Luis Valley: -2K
 Eastern Plains: 7K



Source: Colorado State Demography Office

October

Colorado Population Change by Decade, 1950-2050



Uncertainties to the Forecast +/-

- Intl' immigration
- Water
- Housing - supply, price, type, location
- Aging - labor force, prepared labor force
- Pandemic uncertainty
- Infrastructure/Transportation
- Natural disasters - nationally
- State Budget
- Industry changes - boom/bust, competitiveness





Thank you

State Demography Office
Department of Local Affairs

Elizabeth Garner

Elizabeth.garner@state.co.us

303-864-7750

Demography.dola.colorado.gov



COLORADO
Department of Local Affairs